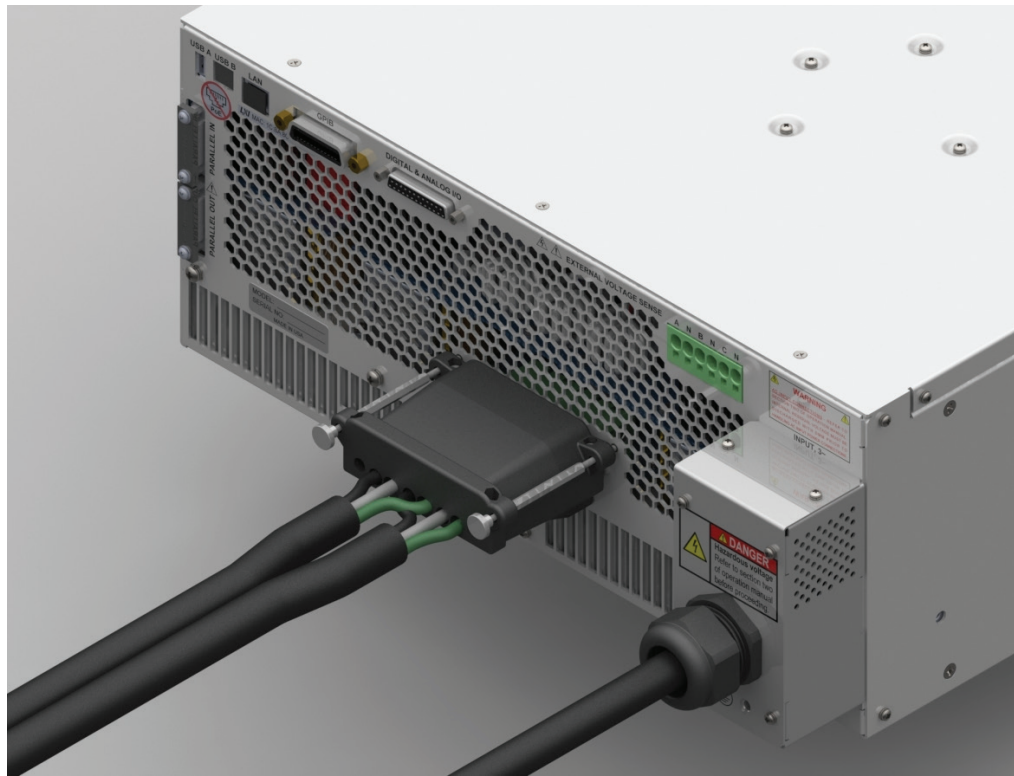


Safety Cover Option Features:

- Compatible with ADF and AFX Series Power Source models
- AC Input Safety Cover, qty 1
- AC Input Wires Strain Relief, qty 1
- AC Output Safety Cover, qty 1
- AC Output Wires Strain Relief, qty 1
- Three Phase or Single Phase Output Connector versions available



AFX / ADF Series Real Panel View with Safety Covers Kit Installed

Safety Cover & Strain Relief Kit Options

The optional Safety Cover and Strain Relief Kits provide covers for both AC input connection and AC/DC Output connection made on AFX Series or ADF Series programmable Power Sources.

Both input and output covers include wire strain reliefs to prevent accidental release of input or output wiring.

This kit is easily installed on the rear panel of the AC Power Source using existing mounting studs. Available for either three phase output configuration or single phase output configuration.

Note that AC input and AC output wiring of adequate gauge and current rating is NOT included in this kit and is to be provided by the end-user or system integrator.



THE POWER OF EXPERTISE



FREQUENCY CONVERSION



AEROSPACE



R & D



MILITARY



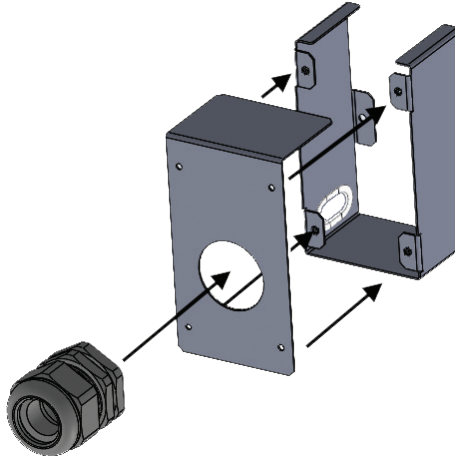
MANUFACTURING



CUSTOM

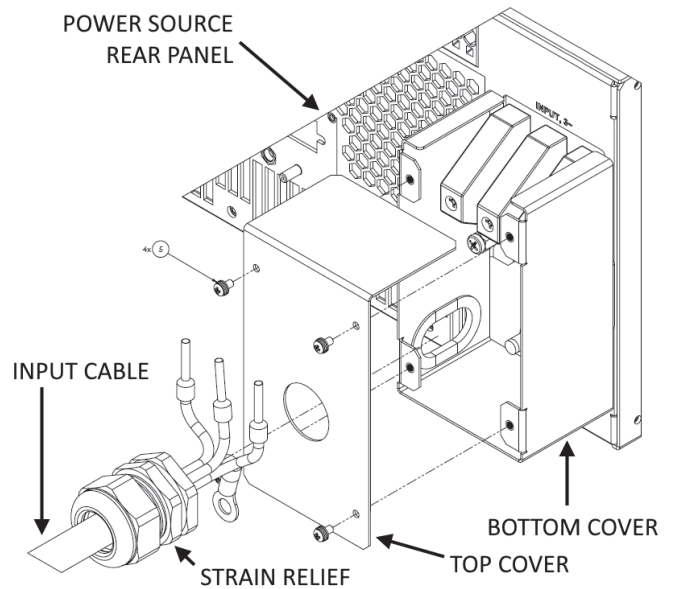
AC Input Cover & Strain Relief

The AC Input cover consists of two parts, a base three sided box that connects to the power source rear panel around the AC Input terminal, a mating cover box with built-in strain relief. Four screws are included to attached the cover to the base box as shown in the image below.



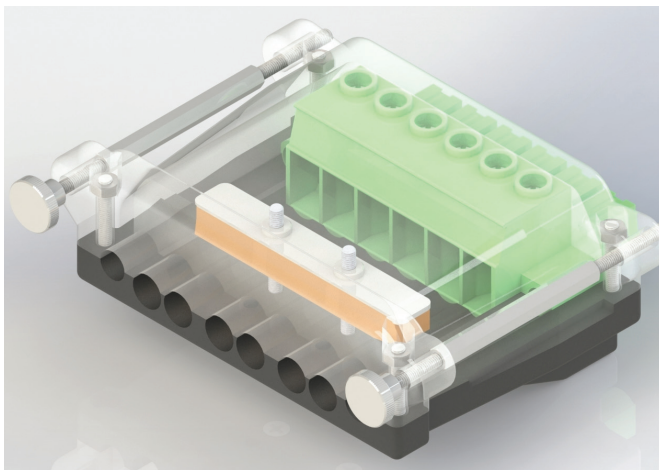
AC Input Cover and Strain Relief assembly

Exploded View



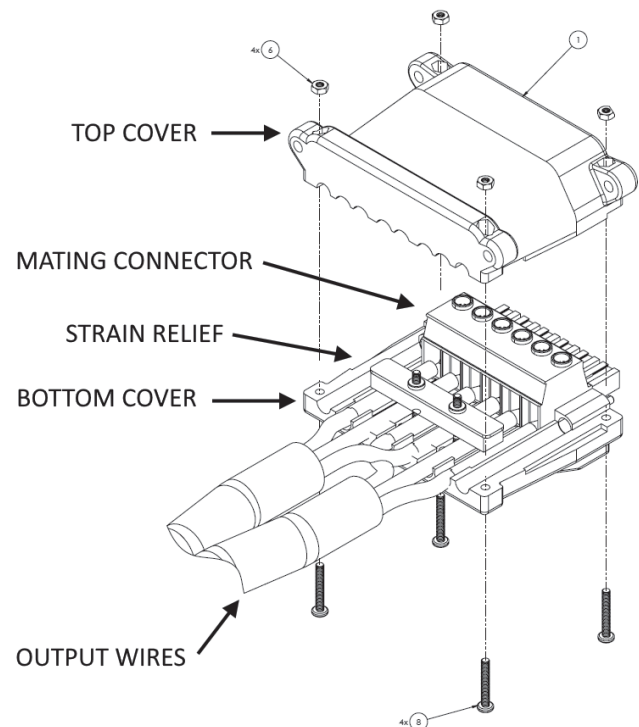
Three Phase Output Cover & Strain Relief

The AC & DC Output cover consists of a PWB assembly containing the mating six position power connector to the Power Source output connector. The strain relief for the output power wiring is also located on this PWB. A set of polyurethane covers is used to encapsulate the entire cover assembly as shown in the figure below.



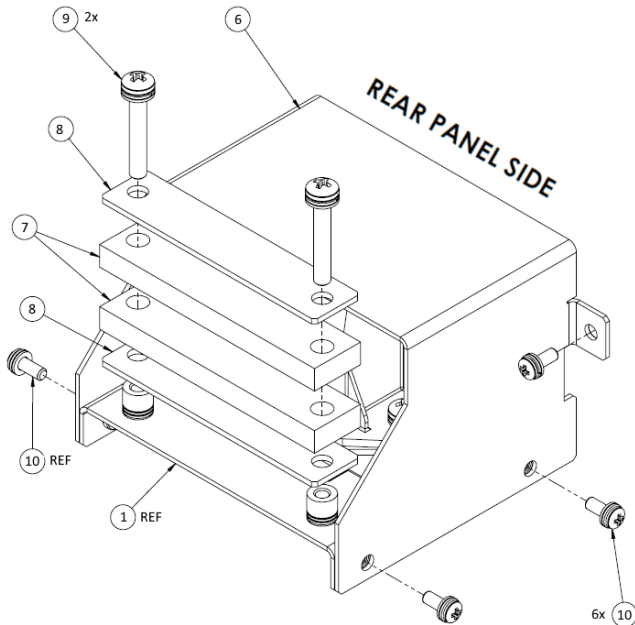
Three Phase Output Cover and Strain Relief assembly

Exploded View - 3 Phase version



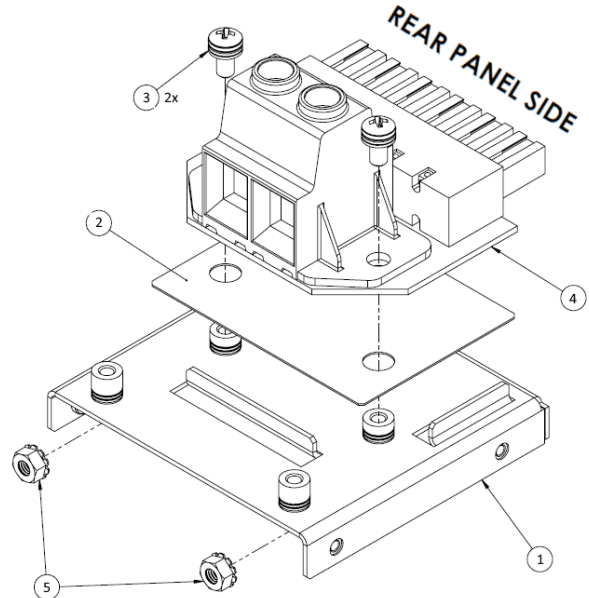
Single Phase Output Cover & Strain Relief

The single phase Output cover consists of a PWB assembly containing a single phase version mating connector to the Power Source output connector. The strain relief for the output power wiring is located on the support plate. A metal cover assembly is used to encapsulate the entire output assembly as shown in the figure below. A detailed view of the shorting connector is shown to the right.



Single Phase Output Cover and Strain Relief assembly

Exploded View - 1 Phase version



NOTE: ENCLOSURE AND STRAIN RELIEF COMPONENTS NOT SHOWN

Ordering Information

PPS P/N	ADF/AFX AC Input	Consists of	FORM ¹
161110	208Vac (-2)	Output Assembly P/N 128080 AC Input Assembly P/N 128081-001	3 Phase
161111		Output Assembly P/N 160086 AC Input Assembly P/N 128081-001	1 Phase
161112	380~480Vac (-4)	Output Assembly P/N 128080 AC Input Assembly P/N 128081-002	3 Phase
161113		Output Assembly P/N 160086 AC Input Assembly P/N 128081-002	1 Phase

Note 1: Form 3 Phase Output connector has separate phase connections. Form 1 Phase Output connector has phases A, B and C Shorted for single phase output.